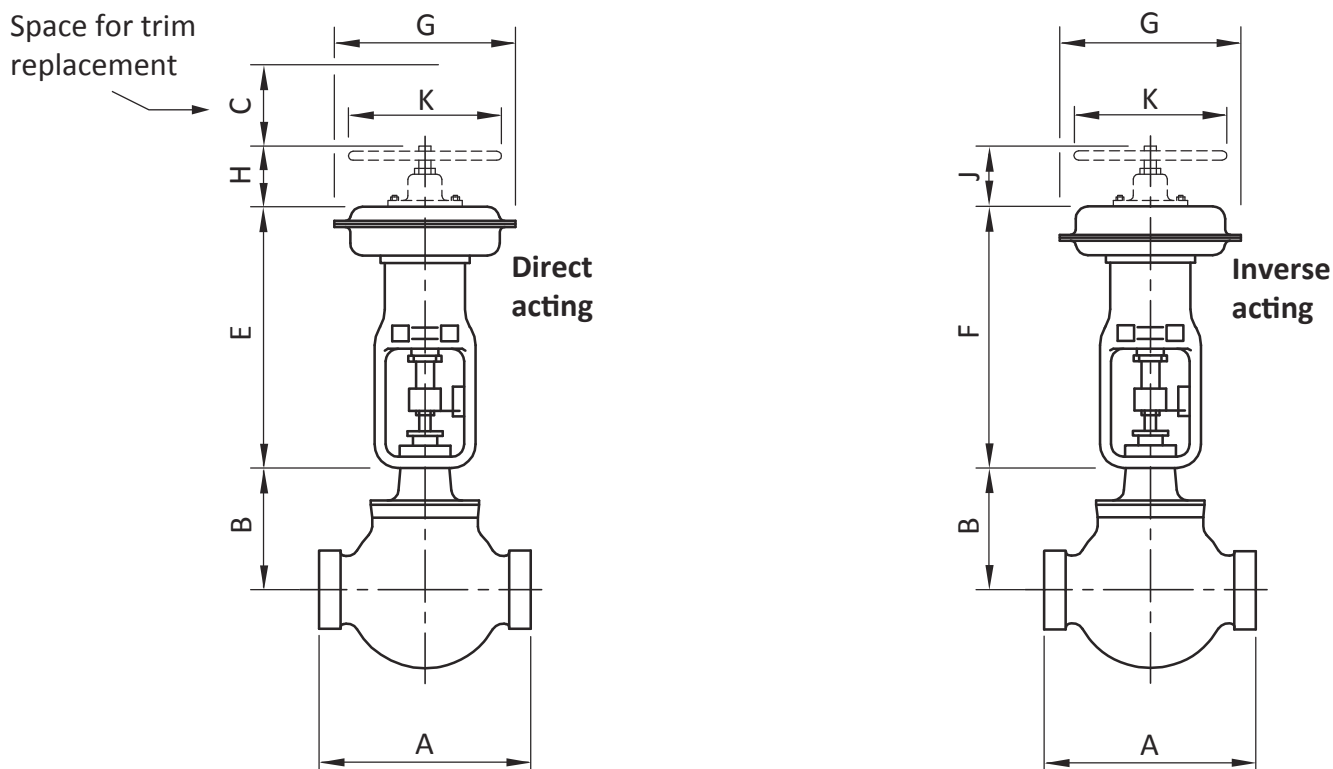


## Valve dimensions, BW / SW / threaded

### ASME Class 150 / 2500



#### BW / SW / Threaded body, mm

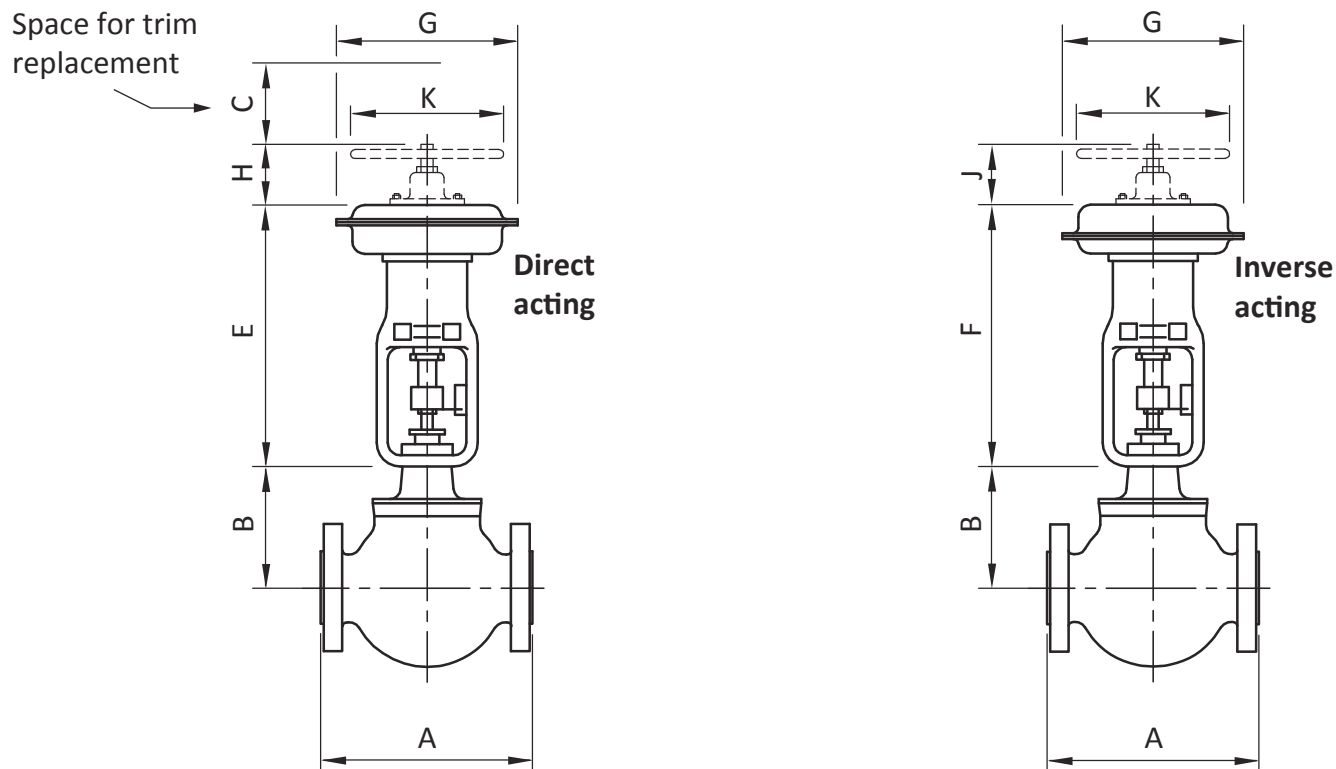
| Valve size |        | 150#, 300#, 600# |     |     | 900#, 1500# |     |     | 2500# |     |     |
|------------|--------|------------------|-----|-----|-------------|-----|-----|-------|-----|-----|
|            |        | A                | B   | C   | A           | B   | C   | A     | B   | C   |
| 3/4        | DN 20  | 187              | 217 | 100 | 194         | 217 | 100 | 216   | 217 | 100 |
| 1          | DN 25  | 187              | 217 | 100 | 194         | 217 | 100 | 216   | 217 | 100 |
| 1 1/2      | DN 40  | 222              | 217 | 100 | 235         | 217 | 100 | 260   | 217 | 100 |
| 2          | DN 50  | 254              | 217 | 100 | 292         | 217 | 100 | 318   | 217 | 100 |
| 3          | DN 80  | 318              | 282 | 125 | 318         | 282 | 125 | 381   | 282 | 125 |
| 4          | DN 100 | 318              | 282 | 125 | 318         | 282 | 125 | 381   | 282 | 125 |
| 6          | DN 150 | 451              | 392 | 200 | 508         | 392 | 200 | 610   | 392 | 200 |
| 8          | DN 200 | 543              | 457 | 250 | 610         | 457 | 250 | 762   | 457 | 250 |
| 10         | DN 250 | 673              | 572 | 350 | 762         | 572 | 350 | 1016  | 572 | 350 |
| 12         | DN 300 | 737              | 630 | 400 | 914         | 630 | 400 | 1118  | 630 | 400 |
| 14         | DN 350 | 851              | 689 | 450 | 1064        | 689 | 450 | 1268  | 689 | 450 |
| 16         | DN 400 | 1016             | 759 | 500 | 1114        | 759 | 500 | 1400  | 759 | 500 |

#### Pneumatic actuator dimensions, mm

| Model | Dimensions |     |     |     |            |             |
|-------|------------|-----|-----|-----|------------|-------------|
|       | E          | F   | G   | K   | H (Direct) | J (Reverse) |
| VW330 | 462        | 500 | 292 | 254 | 152        | 165         |
| VW350 | 594        | 719 | 384 | 457 | 273        | 267         |
| VW380 | 764        | 781 | 457 | 457 | 273        | 292         |
| VW390 | 835        | 889 | 457 | 457 | 245        | 298         |

## Valve dimensions, flanged

ASME Class 150 / 600



### Flanged body, mm

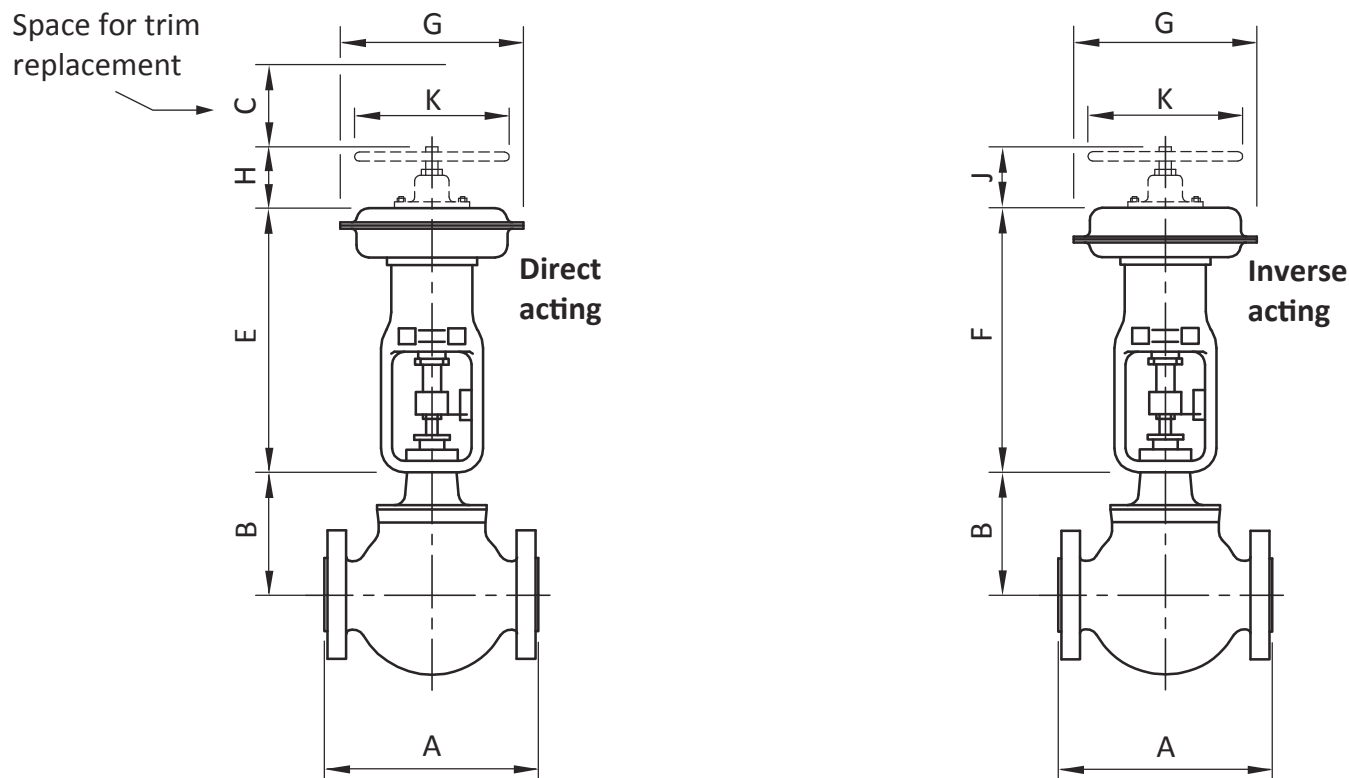
| Valve size |        | 150#, PN 10, P 16/25 |     |     | 300#, PN 40 |     |     | 600#, PN 64, PN 100 |     |     |
|------------|--------|----------------------|-----|-----|-------------|-----|-----|---------------------|-----|-----|
|            |        | A                    | B   | C   | A           | B   | C   | A                   | B   | C   |
| 3/4        | DN 20  | 184                  | 217 | 100 | 194         | 217 | 100 | 206                 | 217 | 100 |
| 1          | DN 25  | 184                  | 217 | 100 | 197         | 217 | 100 | 210                 | 217 | 100 |
| 1 1/2      | DN 40  | 222                  | 217 | 100 | 235         | 217 | 100 | 251                 | 217 | 100 |
| 2          | DN 50  | 254                  | 217 | 100 | 267         | 217 | 100 | 286                 | 217 | 100 |
| 3          | DN 80  | 298                  | 282 | 125 | 318         | 282 | 125 | 337                 | 282 | 125 |
| 4          | DN 100 | 352                  | 320 | 150 | 368         | 320 | 150 | 394                 | 320 | 150 |
| 6          | DN 150 | 451                  | 392 | 200 | 473         | 392 | 200 | 508                 | 392 | 200 |
| 8          | DN 200 | 543                  | 457 | 250 | 568         | 457 | 250 | 610                 | 457 | 250 |
| 10         | DN 250 | 673                  | 572 | 350 | 708         | 572 | 350 | 752                 | 572 | 350 |
| 12         | DN 300 | 737                  | 630 | 400 | 775         | 630 | 400 | 819                 | 630 | 400 |
| 14         | DN 350 | 889                  | 689 | 450 | 927         | 689 | 450 | 972                 | 689 | 450 |
| 16         | DN 400 | 1016                 | 759 | 500 | 1057        | 759 | 500 | 1108                | 759 | 500 |

### Pneumatic actuator dimensions, mm

| Model | Dimensions |     |     |     |            |             |
|-------|------------|-----|-----|-----|------------|-------------|
|       | E          | F   | G   | K   | H (Direct) | J (Reverse) |
| VW330 | 462        | 500 | 292 | 254 | 152        | 165         |
| VW350 | 594        | 719 | 384 | 457 | 273        | 267         |
| VW380 | 764        | 781 | 457 | 457 | 273        | 292         |
| VW390 | 835        | 889 | 457 | 457 | 245        | 298         |

## Valve dimensions, flanged

### ASME Class 900 / 2500



#### Flanged body, mm

| Valve size |        | 900#, PN 160 |     |     | 1500# , PN 250 |     |     | 2500#, PN 320, PN 400 |     |     |
|------------|--------|--------------|-----|-----|----------------|-----|-----|-----------------------|-----|-----|
|            |        | A            | B   | C   | A              | B   | C   | A                     | B   | C   |
| 3/4        | DN 20  | 273          | 217 | 100 | 273            | 217 | 100 | 308                   | 217 | 100 |
| 1          | DN 25  | 273          | 217 | 100 | 273            | 217 | 100 | 308                   | 217 | 100 |
| 1 1/2      | DN 40  | 311          | 217 | 100 | 311            | 217 | 100 | 359                   | 217 | 100 |
| 2          | DN 50  | 340          | 217 | 100 | 311            | 217 | 100 | 359                   | 217 | 100 |
| 3          | DN 80  | 387          | 282 | 125 | 406            | 282 | 125 | 498                   | 282 | 125 |
| 4          | DN 100 | 464          | 420 | 150 | 483            | 320 | 150 | 575                   | 320 | 150 |
| 6          | DN 150 | 600          | 392 | 200 | 692            | 392 | 200 | 819                   | 392 | 200 |
| 8          | DN 200 | 781          | 457 | 250 | 838            | 457 | 250 | 1022                  | 457 | 250 |
| 10         | DN 250 | 864          | 572 | 350 | 991            | 572 | 350 | 1270                  | 572 | 350 |
| 12         | DN 300 | 1016         | 630 | 400 | 1130           | 630 | 400 | 1321                  | 630 | 400 |
| 14         | DN 350 | 1257         | 689 | 450 | 1257           | 689 | 450 | 1471                  | 689 | 450 |
| 16         | DN 400 | 1422         | 759 | 500 | 1422           | 759 | 500 | 1621                  | 759 | 500 |

#### Pneumatic actuator dimensions, mm

| Model | Dimensions |     |     |     |            |             |
|-------|------------|-----|-----|-----|------------|-------------|
|       | E          | F   | G   | K   | H (Direct) | J (Reverse) |
| VW330 | 462        | 500 | 292 | 254 | 152        | 165         |
| VW350 | 594        | 719 | 384 | 457 | 273        | 267         |
| VW380 | 764        | 781 | 457 | 457 | 273        | 292         |
| VW390 | 835        | 889 | 457 | 457 | 245        | 298         |